

SEI

Sheltered English Instruction

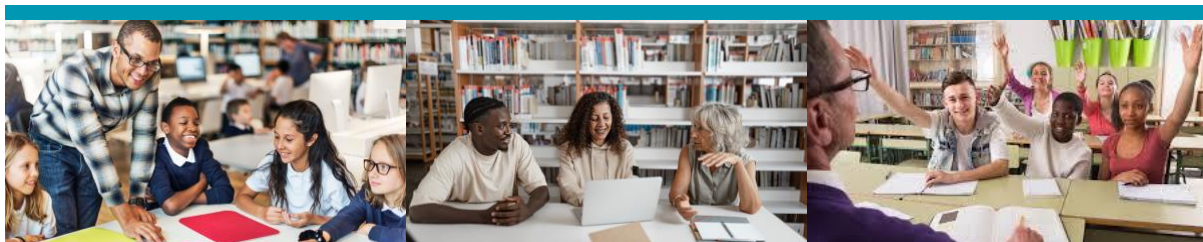
Unlock Student
Success for ELLs

Are you ready to transform your classroom and empower English Language Learners (ELLs) with effective, research-based strategies? **Sheltered English Instruction** provides teachers with the tools to make content accessible while building language skills, ensuring all students thrive academically. This approach integrates language development with subject matter instruction, creating an engaging and supportive learning environment.

Key topics covered in training:

- **Scaffolding & Differentiation** – Strategies to make complex content accessible for ELLs through language objectives.
- **Academic Language Development** – Help students master the language of learning.
- **Comprehensible Input Strategies** – Make lessons clear and meaningful for ALL students.
- **Engaging ELLs in Classroom Discussions** – Encourage your ELLs to participate through interactive learning strategies
- **Assessment & Progress Monitoring** – Track ELLs' learning growth and use data to adapt instruction to meet the needs of ELLs.

Join us and discover how to break down barriers, foster meaningful learning experiences, and set your ELLs up for success!



Sheltered Instruction is designed to help English learners acquire both English language skills and academic content, making it a versatile approach suitable for various educational settings. (IRIS Center at Vanderbilt University)

Sheltered Instruction provides second language learners with the same high-quality, academically challenging content as native English speakers, ensuring equitable educational opportunities. (Rhode Island Teachers of English Language Learners (RITELL))

Sheltered Instruction is key to programs for English learners, providing content area instruction at grade level in English with comprehensible input methods, facilitating better understanding and academic performance. (Texas Education Agency)

8:00 AM - 8:30 AM
Welcome and Icebreaker

8:30 AM - 9:15 AM
Introduction to Sheltered Instruction
Overview of training goals and objectives

9:15 AM - 10:15 AM
Scaffolding and Differentiation
Understanding the difference and Applying effective strategies

10:30 AM - 11:30 AM
Academic Language Development
Building a strong foundation for all learners

11:30 AM - 12:30 PM
Comprehensible Input Strategies
Making content accessible and Techniques for using native language supports effectively

1:30 PM - 2:30 PM
Engaging ELLs in Classroom Discussions
Encouraging meaningful participation

2:30 PM - 3:00 PM
Collaboration and Communication in MTSS
Building a supportive team and effective communication strategies.

3:00 PM - 3:30 PM
Assessment and Progress Monitoring
Using data to inform and adapt instruction.

3:30 PM - 4:15 PM
Action Planning and Implementation

Closing Remarks and Evaluation
Recap, feedback, and next steps for continued growth.